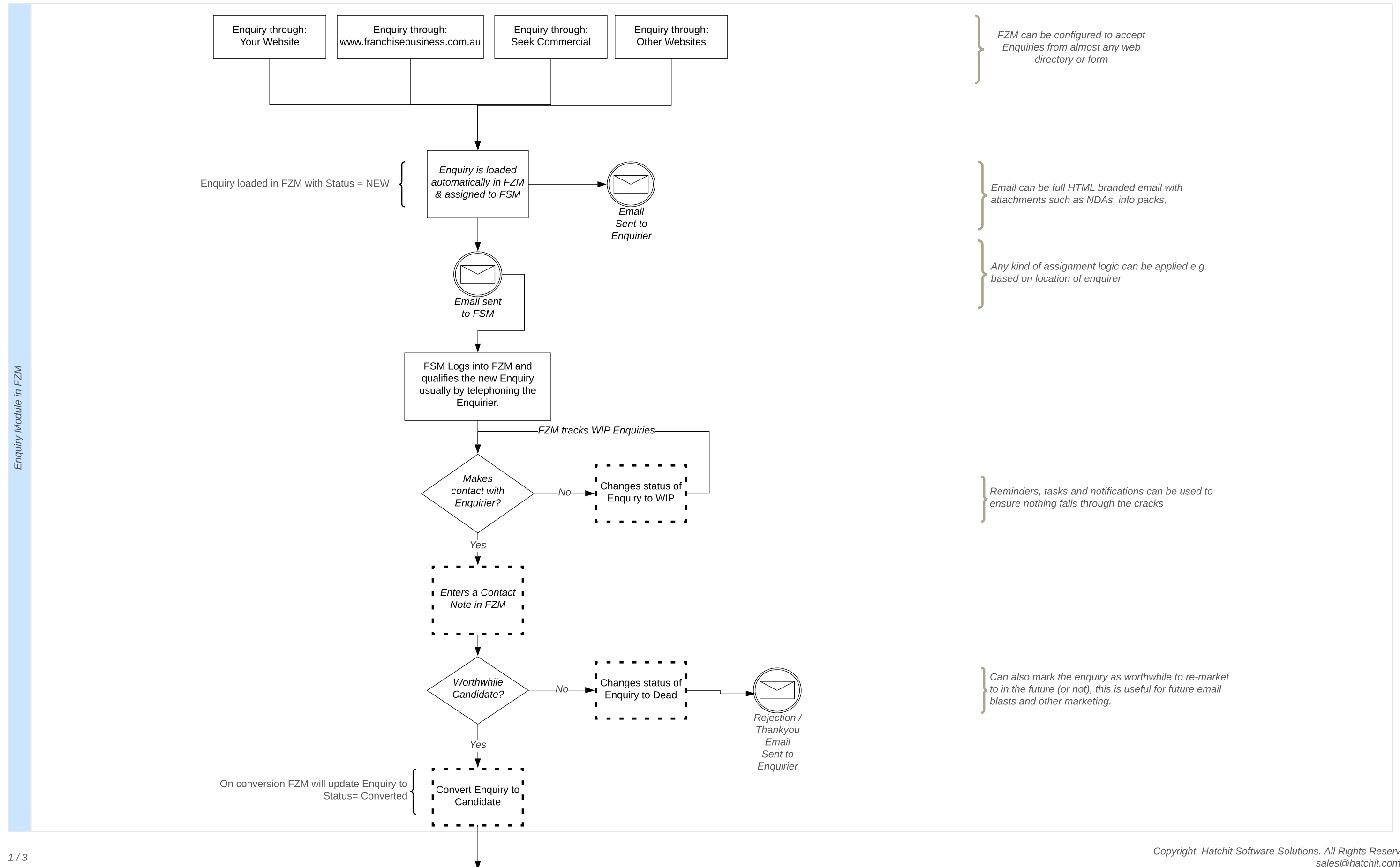
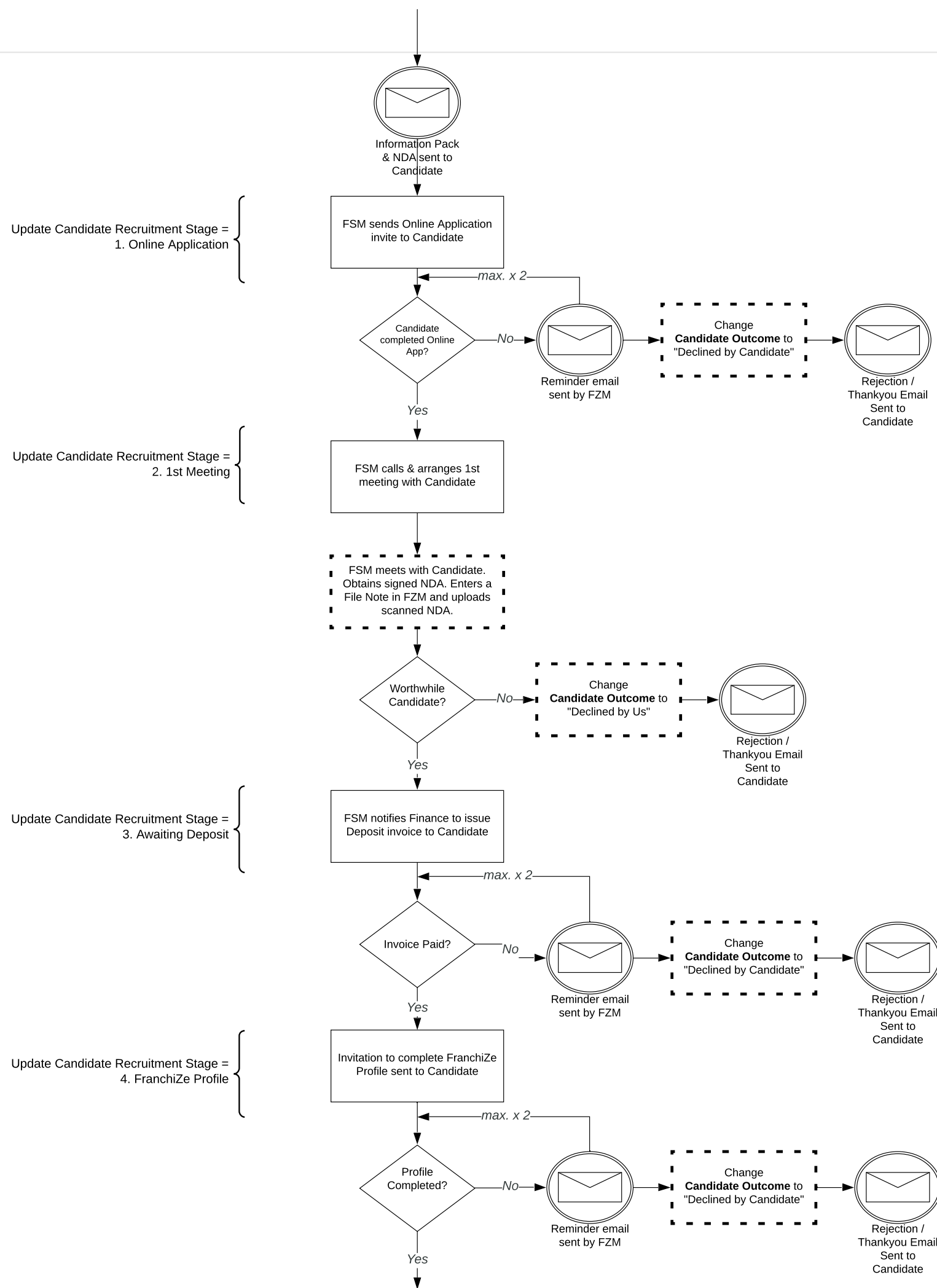


FZM = FranchiZeManager system

FSM = Franchise Sales Manager i.e. the executive at National Support Office responsible for new franchise sales and recruitment





Online Applications is an optional feature where we put your application form online. The FSM sends an invite (by email) to the Candidate to complete the application and submit it online. This removes paperwork and keying from the system.

Sign Request is available for online document signing. Good for NDAs and other legal documents.

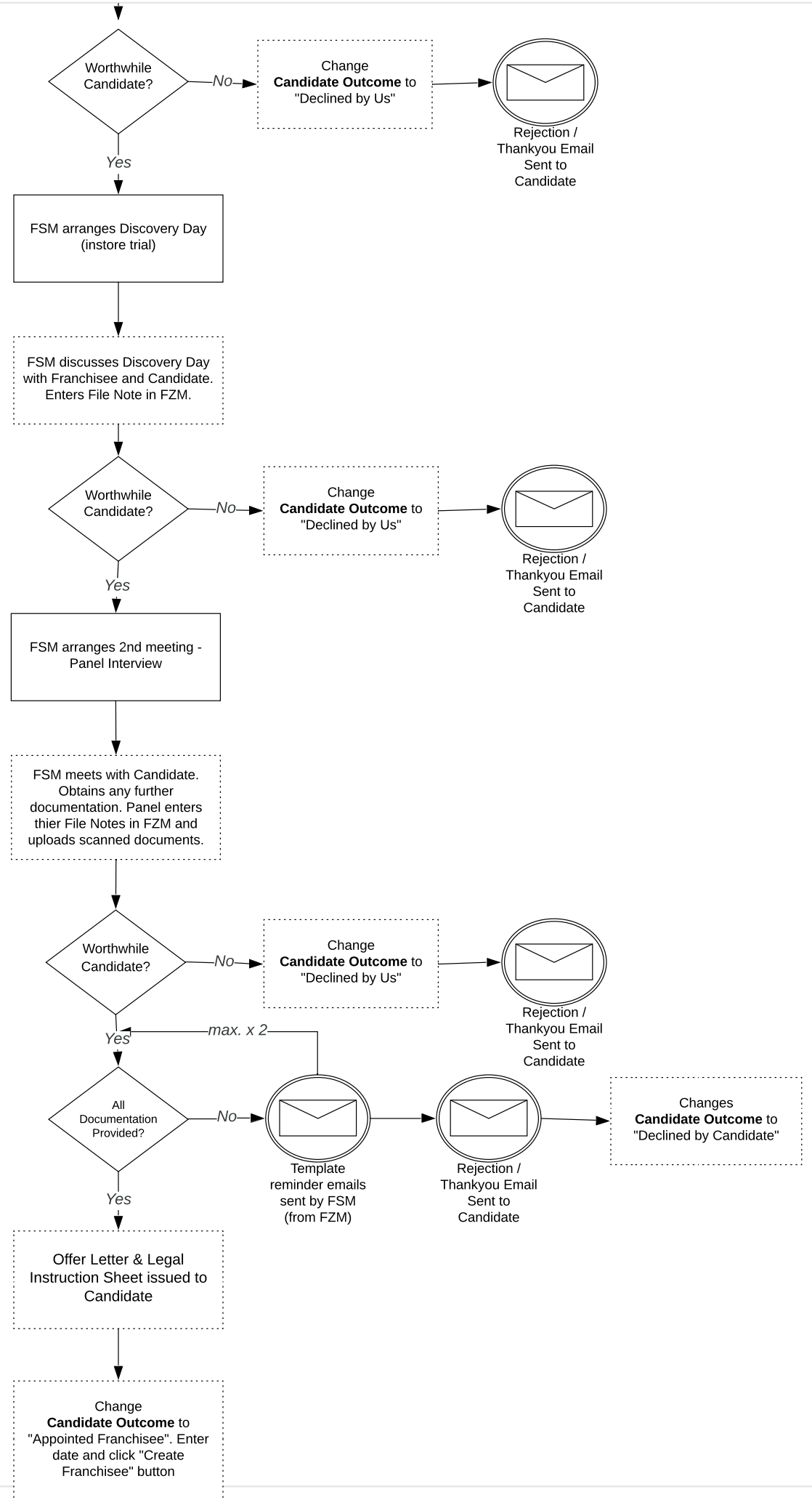
You can establish any number of Template Emails in the system quickly send a notification to other users or external people

FZM is integrated with the most proven Franchise psych recruitment profile in the world. Used in Canada, US, UK, Australia and NZ. See www.franchise-profiles.com.au for more details.

Update Candidate Recruitment Stage = 5. Discovery Day

Update Candidate Recruitment Stage = 6. 2nd Meeting

Update Candidate Recruitment Stage = 7. Final Documentation



As a customisation, Evaluation forms for Discovery Day events can be loaded into FZM. These allow you to track the performance of the Candidate on the day.

All documents can be scanned, uploaded and stored within the FZM system for future record keeping. Typically includes fincnace checks, police checks, resume, financials, etc.

From this moment onwards the Opener module is used to manage the process from here to the opening of the franchisee and thier induction